

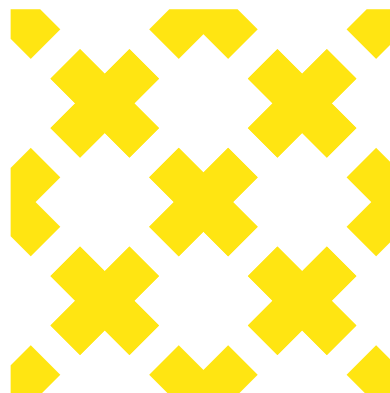
**awnings**

**dollar  
curtains  
+blinds**



## why choose dc+b

- + Established in 1967 - A company you can trust
- + Family owned + operated Australian business
- + Affordable + value for money
- + We do it all with no hidden costs - Our experienced team measure, quote, manufacture + install
- + Free measure + quote
- + The largest network of stores in Australia making it more convenient for you to visit our team at your local dc+b store
- + Australia's largest range of samples + full sized displays so you can be confident you're making the right decision
- + Peace of mind with our three year warranty
- + Exceptional quality which provides long term value + increases your property's appreciation
- + Market leading materials, manufacturing processes, advanced technology + quality control systems
- + Authentic 100% custom made handcrafting without any pre-fabrication or shortcuts
- + Australian Business Quality Award Winner
- + Best of Houzz Service Award Winner



## why choose dc+b awnings

Whether you're looking for an Awning to provide shade and increase your home's insulation, or to create an all inclusive outdoor room to enjoy all year round, we have the Outdoor product to suit - all custom made to fit your external shading requirements.

At dc+b, our Awnings are proudly made in Australia which means you can be sure of a higher standard of quality, more variety and better service; all vital advantages.

We manufacture our Awnings ourselves which means we can charge you less and offer you more - less hidden costs means factory direct prices and more value for your money. It also means shorter waiting times so you can get your outdoor products installed sooner.

- + Stylish
- + Robust
- + Energy efficient

- + Made for you - Australian made, for the Australian market
- + Flexibility - Choose your style, fabric, transparency, colour, finish, control type + accessories from Australia's largest range
- + No short cuts - 100% custom designed + manufactured
- + Consistent quality - Every product goes through stringent quality control testing
- + Market leading - The highest quality fabrics + componentry made to last in Australia's harsh climate

## select install options

The location of your Awning is a key factor in selecting the range and style. Our wide variety means that we have the perfect solution for every location.

When you are choosing your Awning, the most important factors to consider are its functionality and how the system can be adapted to the requirements of its location.

### options include

- + Windows
- + Balconies + terraces
- + Patios + pergolas
- + Sliding doors + entrances
- + Pool areas

### key benefits

- + Reflects heat
- + Keeps interiors cool
- + Reduces energy costs



There are several things to consider when choosing the right Awning for your location:

- + The orientation of the sun + how much shade you require.
- + The Awning projection when fully opened - this varies + is determined by which system you choose.
- + The colour + finishes on your Awning. We have an extensive colour range that will compliment any exterior space.
- + Choose an Awning that can fit your dimensions perfectly to be the most effective.
- + The weight of the Awning is also important, so we always ensure it is installed where it does not exceed the load-bearing capacity of the wall.





## window awnings

- + Automatic
- + Fixed Guide
- + Straight Drop

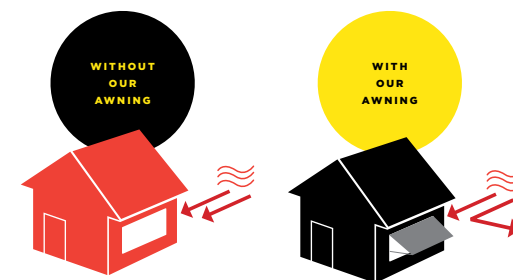
## window awnings

**Keep the sun and heat out of your home with our Awnings installed on your windows.**

Our Window Awnings are the ultimate product for protection against the harsh Australian sun. Reducing sunlight and glare on your windows, they offer protection for the inside of your home from sun damage and greatly improve your home's energy efficiency.

Fabrics are available which block and reflect up to 95% of solar energy before it reaches the window, resulting in keeping your house cool, saving you energy and money.

Durable and practical, adjustable or retractable, Awnings can be rolled up in the winter to let the sun warm your house.



## alfresco awnings

- + Zipscreen
- + Straight Drop
- + Wire Guide
- + Pivot Arm

### EASY OPERATION

Instantly open or close depending on the sun direction

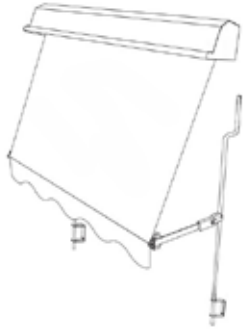


## select window awning style

Design smarts and timeless style with our Window Awnings. No matter what shape or size window, with us you can personalise the perfect Awning to suit your external shading requirements and location. Our Window Awning styles include our Automatic, Fixed Guide and Straight Drop Awnings.

### AUTOMATIC

Traditional Window Awning ideal for ground floor windows. Spring operation.



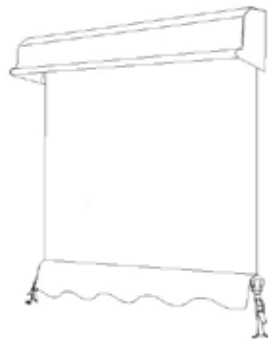
### FIXED GUIDE

Traditional Window Awning for harder to reach windows. Preferred Window Awning for when motorised operation is chosen. Can also be spring or manual crank operation.



### STRAIGHT DROP

A window or Alfresco Awning. Perfect when posts, pillars or walls are not available for the installation of guides. Spring, manual crank or motorised operation.



### CLIMATE CONTROL

Our Automatic Awnings block and reflect solar energy before it reaches your window

## automatic window awning

Want to shade your windows from direct sunlight, without losing out on fresh air and breezes? Then our Automatic Window Awning is for you.

The Automatic Window Awning is fixed to the wall and when in the dropped position allows airflow between the fabric and window. The slanted design sits out from the base of the window, inviting breezes while maintaining privacy and sun, heat and UV protection.

The use of longer arms that increase the Awnings angled projection from the window provides a larger air

pocket so the Awning works more efficiently and keeps the hot sun further from the façade increasing your home's energy efficiency. This projection also allows the window to be able to be opened to let fresh air or breezes in to cool your home.

When retracted the fabric is protected year round by our powder coated steel hoods that can be coordinated to match the colour of any home's façade.



## automatic window awning



Perfect performance year after year, thanks to our mouldings imported from the engineering industry. Revered for its outstanding strength and longevity.

Despite the name this Awning isn't actually motorised. Its name comes from the clever Automatic locking mechanism it has. Shade your windows from direct sunlight, with the Automatic Window Awning. Ideal for ground floor locations.



## fixed guide window awning

**If you would like to motorise your Window Awning then our Fixed Guide style is for you.**

Fixed Guide Window Awnings are an ideal outdoor Awning for homes with higher, hard to reach windows as they can be operated not only with our spring operation but also using our manual crank or our motorised operation so you can operate your Awnings with the touch of a button from inside your home.

In the same way as the Automatic Window Awning, the Fixed Guide Window Awnings shade your windows from direct sunlight, without losing out on fresh air and breezes.

Fixed Guide Window Awnings are mounted to the wall and when in the dropped position allows airflow between the fabric and window. The slanted design sits out from the base of the window, inviting breezes while maintaining privacy and sun, heat and UV protection.

The angled projection of the Awning from the window provides a larger air pocket so the Awning works more efficiently and keeps the hot sun further from the façade increasing your home's energy efficiency. This projection also allows the window

to be able to be opened to let fresh air or breezes in to cool your home.

When retracted the fabric is protected year round by our powder coated steel hoods that can be coordinated to match the colour of any homes façade.



# straight drop window awning

Straight Drop Window Awnings are a traditional Awning style that uses no guides making it ideal for sun/UV protection, airflow and where fixed arms or guides are not suitable.

It is the perfect Awning selection if posts, pillars or walls are not available for the installation of guides.

The Straight Drop Window Awning is the only Window Awning style that can be used for both Window Awnings or as a cost effective Alfresco Awning. A hood is used instead of a headbox and a different base rail to the Straight Drop alfresco (alpha) Awning.



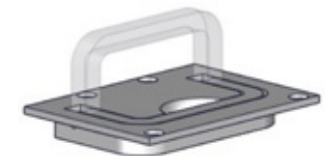
## SECURING IN PLACE

Straight Drop Awnings can be secured in place with dog clips and saddles, or breeching staples and straps.

- + Dog Clips + Saddles
- + 350mm Hold Down Straps + Breeching Staples
- + 450mm Hold Down Straps + Breeching Staples
- + 750mm Hold Down Straps + Breeching Staples

## FLUSH MOUNT STRAP DOWN LOOPS

Flush mount strap down loops (deck plates) are also available for Straight Drop Awnings, where a trip hazard can be avoided. Supply only.





## select window awning finish

Choose from our range of finishes such as the contemporary bottom rail or opt for a straight or the more traditional scallop finish.



### FINISH OPTIONS

- + Exposed Bottom Rail (no flap)
- + Scallop Flap with Bias
- + Straight Flap Hemmed (no bias)
- + Straight Flap with Bias

## select window awning operating options

Our Window Awnings have been developed to offer maximum flexibility for operation.

### AUTOMATION\*

With a touch of a button, watch your Awnings lift and lower from inside your home. Our motors are developed with several settings which can be engaged or turned off at any time. They include a fabric tension setting for a smooth finish, an impact setting to prevent objects from damaging the Awning or motor whilst in motion and a favourite position so with a touch of the button all Awnings will raise or lower to this same position.

With our Pulse PRO you can enjoy sophisticated window covering control using our 'dc+b control' app via your smart phone or tablet, or voice control through your smart device. View our automation brochure for more information.

Our Solar Powered Wind and Sun Sensor naturally reacts to the elements to automatically open or close your Awning, always providing a comfortable external environment or protection of the Awning.

\*Automation is not available for Automatic Window Awnings.

### SPRING OPERATED

Easy to use spring operation whereby the Awning is constantly under tension and requires, clips, straps, automatic arms or to be tied off to prevent the Awning rolling up.

### MANUAL CRANK OPERATED

The manual crank operation is designed to take the weight out of lifting the Awning. The crank gears have a ratio of 3.5:1 and 9:1 making it easier for any age person to lift and lower their Awning.







sun/uv  
protection



rain  
protection



insect  
protection



glare  
reduction



added  
privacy



coastal  
approved

## alfresco awnings

It's never been so easy to create a space that can be enjoyed 365 days a year. Perfected for the Australian lifestyle by ensuring the design and quality are paramount, our Alfresco Awnings are essential for privacy and sun protection.

### More living space

Increase the floor plan of your home without the hassles of renovation.

### Protection and comfort

Relax, entertain and dine outdoors unhindered by the elements, all year round. Enjoy sun, rain and insect protection, along with glare control

### Privacy without constraint

Experience more privacy without compromising your views..

### Energy efficiency

Our Alfresco Awnings have been independently tested and proven to significantly reduce cooling energy costs by keeping a home at a consistent and comfortable temperature throughout the summer months.

### Premium design

Designed and built in Australia, our Alfresco Awnings modern aesthetic and high-quality engineering integrates seamlessly with your home.

## select alfresco awning style

Mix and match our Awning styles while still maintaining a consistent appearance for your home. All 4 Alfresco Awning styles within our range use common hardware for a consistent appearance, regardless of which Awning you choose. Personalise the perfect Awning to suit your external shading requirements.

### ZIPSCREEN



### STRAIGHT DROP



### WIRE GUIDE



### PIVOT ARM

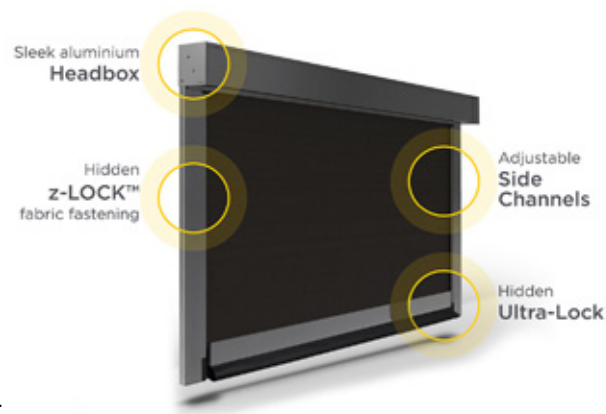


# zipscreen awnings

**Zipscreen is the ultimate external screening solution for any outdoor area**

With over 30 years of research, design and performance testing, Zipscreen's patented blind technology has been engineered to provide next-level home integration.

Our Zipscreen Awnings keep you shielded from the weather, offering privacy and protection all year round.



## Hidden z-LOCK™ technology

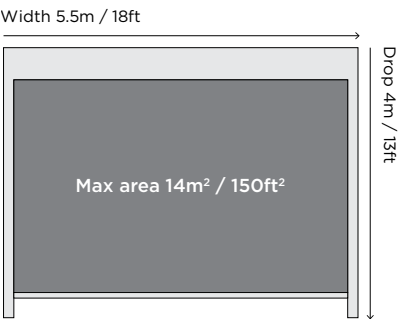
Breakthrough z-LOCK™ technology provides a unique fabric guide, fastening and securing the welded zip and fabric concealed within the side channels; creating a strong, smooth and streamlined system.

The hidden z-LOCK™ function ensures no gap between the fabric screen and side channels and a secure guided movement for increased strength and protection from the elements.



## Zipscreen capacity

Your custom designed system can be made in widths of up to 5.5 metres, offering you an external solution to fit any area. This allows you to experience more privacy without compromising your view.





## select zipscreen alfresco awning lock options

### One Action Ultra-Lock

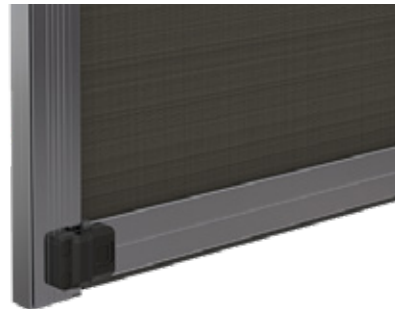
Invisibly integrated, Ultra-Lock's patented technology seamlessly reinforces your Zipscreen, for reduced movement and an ultra-smooth fabric finish.

Our Ultra-Lock perfectly secures your Zipscreen automatically, without an external lock or latch, and utilises an in-built, selfcorrecting system, to ensure your screen evenly clicks in place. Ultra-durable. Ultra-reliable. Ultra-Lock.



### Easy to use Latch-Lock

Latch-Lock utilises a spring pin system. When the Awning is pulled down it will automatically clip into the latch and lock off. To unlock the Awning, each pin can be released and the Awning can be raised up.



### Seal strips

The floor surface is often not perfectly level. There can be room for light gaps, insects, debris, wind and rain to enter.

For motorised Zipscreen Alfresco Awnings, seal strips are inserted into the bottom rail which can assist in eliminating gaps and protect the bottom rail from getting damaged.







## straight drop alfresco awning

A sleek and simple design with a contemporary look similar to a Blind.

Our Straight Drop Alfresco Awning does not protrude and is therefore ideal for areas with limited space or for the fronts and sides of decks, verandas or patios.

It is the perfect Awning to select if posts, pillars or walls are not available for the installation of channels, and allows for uninterrupted views when the Awning is raised.



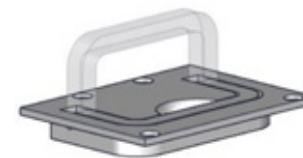
### SECURING IN PLACE

Straight Drop Awnings can be secured in place with dog clips and saddles, or breeching staples and straps.

- + Dog Clips + Saddles
- + 350mm Hold Down Straps + Breeching Staples
- + 450mm Hold Down Straps + Breeching Staples
- + 750mm Hold Down Straps + Breeching Staples

### FLUSH MOUNT STRAP DOWN LOOPS

Flush mount strap down loops (deck plates) are also available for Straight Drop Awnings, where a trip hazard can be avoided. Supply only.





## pivot arm awning

Our Pivot Arm Alfresco Awnings are ideal for Awning windows, keeping them shaded without being completely covered.

The robust spring-loaded arm maintains constant fabric tension, giving you control of the amount of coverage and shade.



Please refer to the above image for the design and shape of the hardware. The below image is for illustrative purposes only.

## wire guide alfresco awning

An industrial look that features discreet cable guides that are great for floor-to-ceiling applications where a side channel cannot be installed. Universal brackets fix the base of the wire guide to the floor, face or recess.

Our Wire Guide Alfresco Awning utilises compression springs to ensure the wire tension, ensuring smooth guidance for the fabric that's quick and easy to adjust.





## select alfresco awning accessories

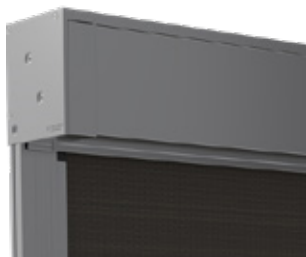
### CLOSED HEADBOX



Keeps the fabric clean from rain, UV and dirt enhancing longevity.

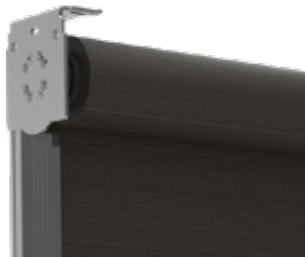
\*Closed headbox not available for Pivot Arm.

### OPEN HEADBOX



Increased air circulation around the roller minimising heat build up.

### OPEN BRACKET



A modern industrial look and is the ideal choice to reduce costs.

### BOTTOM RAILS



Zipscreen, Straight Drop or Wire Guide Alfresco Awnings feature heavy-duty bottom rails to hold the fabric taut and minimise movement from the weather. Designed with a slimline square design, our bottom rails are extruded strong, durable aluminium.

Zipscreen Alfresco Awnings bottom rails come with seal strips. Pivot Arm Alfresco Awnings feature our curved terminal bar.

### BOTTOM RAIL HANDLE



For spring operated Zipscreen, Straight Drop or Wire Guide Alfresco Awnings, our bottom rail handle enhances the look and functionality of your Awnings.

It's UV stabilised for longer lasting exposure to the outdoors and features a square design to match the Awning aesthetic.

## select alfresco awning operating options

### AUTOMATION

Using the best of technology and design, control your Awning with a touch of a button. Choose from our range of motorisation solutions including battery operated or hardwired motors, tactile remotes, app or voice control, and solar-powered ARC Wind and Sun Sensors.

See further information on page 28 and 29.

Our Alfresco Awnings have been developed to offer maximum flexibility for operation.

### SPRING OPERATED

Easy to use spring operation, allows you to manually adjust and secure the height of the Awning.

\*Spring operation not available for Pivot Arm.

### MANUAL CRANK OPERATED

The geared crank ensures easy operation that is not dependent on your strength.






# automation

Our Automate external motors are tailored for our Window Awnings, and Alfresco Awning ranges. Automation reduces the time and effort normally required to operate your Awnings and allows you to open or close the Awnings from inside your home, without the need to go outside.


Choose from battery operated or hardwired motors. For battery operated, a black battery pack is used for easy access when charging or it can be swapped over with an additional battery pack for continuous power. The battery pack will hold charge for up to 12 months and fully recharges within 7 hours.

Our hardwired motors connect to power, so with a permanent power supply there is no need to recharge.


## BATTERY OPERATED OR WIRED OUTDOOR MOTORS




Favourite Positioning




Impact Detection



Three Modes of Fabric Tension

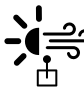


**BATTERY OPERATED EXTERNAL MOTOR**  
Voltage: 12V-DC  
Strength: 15.0Nm  
Speed: 10RPM




**WIRED EXTERNAL TENSION MOTOR**  
Voltage: 240V  
Strength: 15.0Nm  
Speed: 15RPM

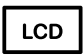
## SOLAR POWERED WIND + SUN SENSOR



Wind + Light Measurements



Power Storage Capacitor



LCD Display



## CONTROLLERS



Pulse PRO and App



Push PRO Remote



Push 15 Remote

## ACCESSORIES



Repeater

# battery operated outdoor motor

## BATTERY PACK CHARGING OPTIONS



Remove + Recharge




Plug + Play




Swap + Sustain


## BATTERY PACK INSTALLATION OPTIONS



Under headbox



Covered face of side channel



Above headbox





#### SMART PHONE CONTROL

For effortless and luxurious outdoor living, pair your motorised Awning with our Automate Pulse PRO and enjoy sophisticated control straight from your smart phone whether you're home or away. Set automatic timers or smart scenes and experience a new level of convenience.



#### VOICE CONTROL

Life can get in the way sometimes, so if you're too busy preparing for the things that matter, simply ask Google, Alexa or Siri to take control of your outdoor Awnings. A simple voice command can raise or lower your outdoor window coverings so you can keep your hands free for everything else.

#### SOLAR POWERED WIND + SUN SENSOR

Our Solar Powered Wind and Sun Sensor measures wind and light intensity to automatically open your Awning once sunlight is detected to provide convenient shading and close in windy conditions to protect and preserve your Awning.

Imagine entertaining outdoors on a bright sunny day, the sun intensity and need for shade increasing. You can be rest assured knowing that your motorised Awning, connected to our Sensor, will activate the Awning to close achieving the optimal level of shade. This occurs when a pre-set lux level is reached, signalling to the Awning that it needs to open and provide shade.



Zipscreen Alfresco Awnings Latch Lock and Ultra Lock are not compatible with the Wind and Sun Sensor.

STEP

3

## select fabric

For sun control and style, our large range of outdoor fabrics, including Colourbond® inspired colours, allow you to match to any new or existing outdoor theme.

### privacy + view through

There are open and closed weave Awning fabrics. Consider if you want day or night time privacy. An open weave fabric in a dark colour gives fantastic view through in the day, but also allows others to see in at night.

### durability

Our fabrics with DURAGUARD® Fabric Protector effectively repel most stain causing agents with its proven, water based preventative formula. This fabric protection is totally invisible and makes cleaning the fabric much easier.



### air flow

If you are enclosing a verandah or patio, consider if you still want to have a nice cool breeze coming through. If this is required, ensure you select our open weave fabric with around 5% openness.

### colour fastness

Ensure the fabric you choose has excellent fade resistance to the sun. Our fabrics are tested to resist fading to ensure your Awnings remain the colour you selected for many years to come.





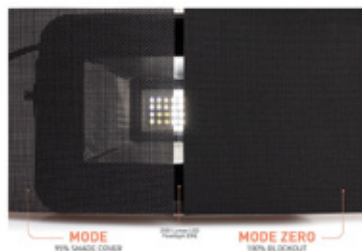
## mesh

Modern breathable mesh is a perfect choice for a mix of air flow and privacy.

Mesh fabric is available with an approximate shade cover of 95% with a 5% openness factor. This is ideal for providing protection from the sun whilst allowing you to enjoy your views.

If you're looking for increased privacy then opt for our mesh fabric with an approximate shade coverage of 99%. With its blackout coverage it will also aid to block out views and increases your wind and rain protection.

The innovative Mode Zero fabric is a modern alternative to canvas. The first true 100% blackout mesh it provides complete privacy and sun protection with its zero % openness, and with a wider width of 320cm, Mode Zero also allows for less fabric joins with most windows.



## canvas

Ideal choice for complete 100% UV Blockout, choose from a range of widths in plain, self striped and coloured stripe designs.



**Our outdoor fabrics are manufactured to withstand the harsh Australian climate with fade, water, mildew and UV protection. Fire retardant fabrics are also available.**

## acrylic

The versatility of 100% Acrylic makes it suited and recommended for folding arm Awnings, hoods and canopies.



STEP

4

**select hardware colour**

Our outdoor ranges are available in a range of standard hardware colours and custom colours are also available to match the home's exterior.





**The largest range of custom made curtains+blinds+shutters+outdoor.**  
**Contact us for your local store P. (03) 9237 1200**



**FREE measure+quote**

**dollarcurtainsandblinds.com.au**

