

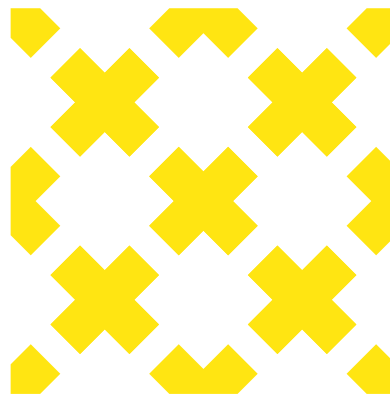
awnings

**dollar
curtains
+blinds**



why choose dc+b

- + Established in 1967 - A company you can trust
- + Family owned + operated Australian business
- + Affordable + value for money
- + We do it all with no hidden costs - Our experienced team measure, quote, manufacture + install
- + Free measure + quote
- + The largest network of stores in Australia making it more convenient for you to visit our team at your local dc+b store
- + Australia's largest range of samples + full sized displays so you can be confident you're making the right decision
- + Peace of mind with our three year warranty
- + Exceptional quality which provides long term value + increases your property's appreciation
- + Market leading materials, manufacturing processes, advanced technology + quality control systems
- + Authentic 100% custom made handcrafting without any pre-fabrication or shortcuts
- + Australian Business Quality Award Winner
- + Best of Houzz Service Award Winner



why choose dc+b awnings

Whether you're looking for an Awning to provide shade and increase your home's insulation, or to create an all inclusive outdoor room to enjoy all year round, we have the Outdoor product to suit - all custom made to fit your external shading requirements.

At dc+b, our Awnings are proudly made in Australia which means you can be sure of a higher standard of quality, more variety and better service; all vital advantages.

We manufacture our Awnings ourselves which means we can charge you less and offer you more - less hidden costs means factory direct prices and more value for your money. It also means shorter waiting times so you can get your outdoor products installed sooner.

- + Stylish
- + Robust
- + Energy efficient

- + Made for you - Australian made, for the Australian market
- + Flexibility - Choose your style, fabric, transparency, colour, finish, control type + accessories from Australia's largest range
- + No short cuts - 100% custom designed + manufactured
- + Consistent quality - Every product goes through stringent quality control testing
- + Market leading - The highest quality fabrics + componentry made to last in Australia's harsh climate

select install options

The location of your Awning is a key factor in selecting the range and style. Our wide variety means that we have the perfect solution for every location.

When you are choosing your Awning, the most important factors to consider are its functionality and how the system can be adapted to the requirements of its location.

options include

- + Windows
- + Balconies + terraces
- + Patios + pergolas
- + Sliding doors + entrances
- + Pool areas

key benefits

- + Reflects heat
- + Keeps interiors cool
- + Reduces energy costs



things to consider

There are several things to consider when choosing the right Awning for your location:

- + The orientation of the sun + how much shade you require.
- + The Awning projection when fully opened - this varies + is determined by which system you choose.
- + The colour + finishes on your Awning. We have an extensive colour range that will compliment any exterior space.
- + Choose an Awning that can fit your dimensions perfectly to be the most effective.
- + The weight of the Awning is also important, so we always ensure it is installed where it does not exceed the load-bearing capacity of the wall.



window awnings



zipscreen awnings



alfresco awnings

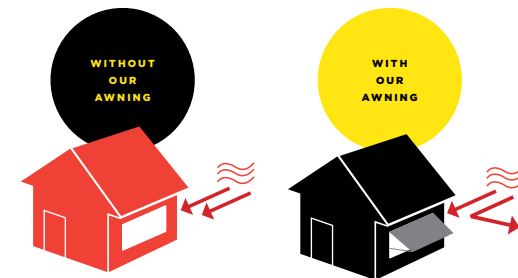
window awnings

Keep the sun and heat out of your home with our Awnings installed on your windows.

Our Window Awnings are the ultimate product for protection against the harsh Australian sun. Reducing sunlight and glare on your windows, they offer protection for the inside of your home from sun damage and greatly improve your home's energy efficiency.

Fabrics are available which block and reflect up to 95% of solar energy before it reaches the window, resulting in keeping your house cool, saving you energy and money.

Durable and practical, adjustable or retractable, Awnings can be rolled up in the winter to let the sun warm your house.



EASY OPERATION
Instantly open or close depending on the sun direction

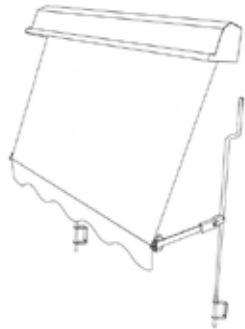


select window awning style

Design smarts and timeless style with our Window Awnings. No matter what shape or size window, with us you can personalise the perfect Awning to suit your external shading requirements and location. Our Window Awning styles include our Automatic, Fixed Guide and Straight Drop Awnings.

AUTOMATIC

Traditional Window Awning ideal for ground floor windows. Spring operation.



FIXED GUIDE

Traditional Window Awning for harder to reach windows. Preferred Window Awning for when motorised operation is chosen. Can also be spring or manual crank operation.



STRAIGHT DROP

A window or Alfresco Awning. Perfect when posts, pillars or walls are not available for the installation of guides. Spring, manual crank or motorised operation.



CLIMATE CONTROL

Our Automatic Awnings block and reflect solar energy before it reaches your window

automatic window awning

Want to shade your windows from direct sunlight, without losing out on fresh air and breezes? Then our Automatic Window Awning is for you.

The Automatic Window Awning is fixed to the wall and when in the dropped position allows airflow between the fabric and window. The slanted design sits out from the base of the window, inviting breezes while maintaining privacy and sun, heat and UV protection.

The use of longer arms that increase the Awnings angled projection from the window provides a larger air

pocket so the Awning works more efficiently and keeps the hot sun further from the façade increasing your home's energy efficiency. This projection also allows the window to be able to be opened to let fresh air or breezes in to cool your home.

When retracted the fabric is protected year round by our powder coated steel hoods that can be coordinated to match the colour of any home's façade.

automatic window awning



Perfect performance year after year, thanks to our mouldings imported from the engineering industry. Revered for its outstanding strength and longevity.

Despite the name this Awning isn't actually motorised. Its name comes from the clever Automatic locking mechanism it has. Shade your windows from direct sunlight, with the Automatic Window Awning. Ideal for ground floor locations.



fixed guide window awning

If you would like to motorise your Window Awning then our Fixed Guide style is for you.

Fixed Guide Window Awnings are an ideal outdoor Awning for homes with higher, hard to reach windows as they can be operated not only with our spring operation but also using our manual crank or our motorised operation so you can operate your Awnings with the touch of a button from inside your home.

In the same way as the Automatic Window Awning, the Fixed Guide Window Awnings shade your windows from direct sunlight, without losing out on fresh air and breezes.

Fixed Guide Window Awnings are mounted to the wall and when in the dropped position allows airflow between the fabric and window. The slanted design sits out from the base of the window, inviting breezes while maintaining privacy and sun, heat and UV protection.

The angled projection of the Awning from the window provides a larger air pocket so the Awning works more efficiently and keeps the hot sun further from the façade increasing your home's energy efficiency. This projection also allows the window

to be able to be opened to let fresh air or breezes in to cool your home.

When retracted the fabric is protected year round by our powder coated steel hoods that can be coordinated to match the colour of any homes façade.



straight drop window awning

Straight Drop Window Awnings are a traditional Awning style that uses no guides making it ideal for sun/UV protection, airflow and where fixed arms or guides are not suitable.

It is the perfect Awning selection if posts, pillars or walls are not available for the installation of guides.

The Straight Drop Window Awning is the only Window Awning style that can be used for both Window Awnings or as a cost effective Alfresco Awning. A hood is used instead of a headbox and a different base rail to the Straight Drop alfresco (alpha) Awning.



SECURING IN PLACE

Straight Drop Awnings can be secured in place with dog clips and saddles, or breeching staples and straps.

- + Dog Clips + Breeching Staples
- + 350mm Straps + Breeching Staples
- + 450mm Straps + Breeching Staples
- + 750mm Straps + Breeching Staples

FLUSH MOUNT STRAP DOWN LOOPS

Flush mount strap down loops (deck plates) are also available for Straight Drop Awnings, where a trip hazard can be avoided. Supply only.



select window awning finish

Choose from our range of finishes such as the contemporary bottom rail or opt for a straight or the more traditional scallop finish.



FINISH OPTIONS

- + Exposed Bottom Rail (no flap)
- + Scallop Flap with Bias
- + Straight Flap Hemmed (no bias)
- + Straight Flap with Bias

select window awning operating options

Our Window Awnings have been developed to offer maximum flexibility for operation.

AUTOMATION*

With a touch of a button, watch your Awnings lift and lower from inside your home. Our motors are developed with several settings which can be engaged or turned off at any time. They include a fabric tension setting for a smooth finish, an impact setting to prevent objects from damaging the Awning or motor whilst in motion and a favourite position so with a touch of the button all Awnings will raise or lower to this same position.

Our Solar Powered Wind and Sun Sensor naturally reacts to the elements to automatically open or close your Awning, always providing a comfortable external environment or protection of the Awning.

With our Pulse Hub 2 you can enjoy sophisticated window covering control using our 'dc+b control' app via your smart phone or tablet, or voice control through your smart device. View our automation brochure for more information.

*Automation is not available for Automatic Window Awnings.

SPRING OPERATION

Easy to use spring operation where by the Awning is constantly under tension and requires, clips, straps, automatic arms or to be tied off to prevent the Awning rolling up.

MANUAL CRANK OPERATION*

The manual crank operation is designed to take the weight out of lifting the Awning. The crank gears have a ratio of 3.5:1 and 9:1 making it easier for any age person to lift and lower their Awning.





ZIPSCREEN
Bring indoor entertaining outdoors



wind resistant



sun/uv protection



insect resistant



coastal approved



privacy



anti-glare



Zipscreen is the ultimate external screening solution for any outdoor area

Privacy and protection all year round, Zipscreen keeps you shielded from the elements and insects, regardless of the season. Whether it be an alfresco, pergola, or veranda, Zipscreen is the perfect addition for any outdoor entertaining area. Your custom designed system can be made in widths up to 5.5 metres offering you an external solution to fit almost any area.



Hidden z-LOCK™ technology

Breakthrough z-LOCK™ technology provides a unique fabric guide, fastening and securing the welded zip and fabric concealed within the side channels; creating a strong, smooth and streamlined system.

The hidden z-LOCK™ function ensures no gap between the fabric screen and side channels and a secure guided movement that won't blow out in the wind.

A total seal provided by Zipscreen's z-LOCK™ technology and bottom sealing strip aids in creating a relaxing insect free environment.

Bottom rails

The Zipscreen bottom rail holds the fabric taut and minimises any movement in windy situations. Heavy-duty weight bars feature a slimline square design and are extruded strong, durable aluminium.

One Action Ultra-Lock

Invisibly integrated, Ultra-lock's patented technology seamlessly reinforces your Zipscreen, for reduced movement and an ultra-smooth fabric finish.

Our Ultra-lock perfectly secures your Zipscreen automatically, without an external lock or latch, and utilises an in-built, selfcorrecting system, to ensure your screen evenly clicks in place.

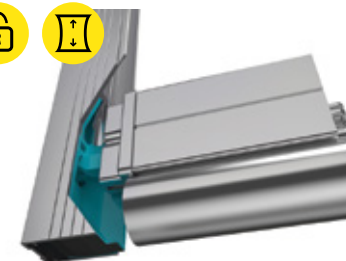
Ultra-durable. Ultra-reliable. Ultra-Lock.

Seal strips

The floor surface is often not perfectly level. There can be room for light gaps, insects, debris, wind and rain to enter. Seal Strips can assist in eliminating these gaps, and can protect the bottom rail from chipping if dropped to the ground quickly.

Easy to use Latch-Lock

Latch-Lock utilises a spring pin system. When the Awning is pulled down it will automatically clip into the latch and lock off. To unlock the Awning, each pin can be released and the Awning can be raised up.



Zipscreen headbox options

Made from engineering-grade, precision-extruded aluminium, the Zipscreen frame and headboxes are ultra-durable and sleek.



Keeps the fabric clean from rain, UV + dirt, enhancing longevity.



Increased air circulation around the roller.

Zipscreen capacity

Width 5.5m / 18ft



Zipscreen operating options

Spring operation or easy to use automation with the option of remote, app or voice control, and our Solar Powered Wind and Sun Sensor to naturally react to the elements and automatically open or close your Zipscreen.



alfresco awnings

Keep the sun, wind, rain and insects out of your outdoor living area.

It's never been so easy to create a space that can be enjoyed 365 days a year than with our range of Alfresco Awnings.

Creating an all-inclusive outdoor room not only offers privacy and sun protection but wind, rain, dust, dirt and insect protection.



Our Alfresco Awnings are proven to reduce cooling energy costs by up to 60%*

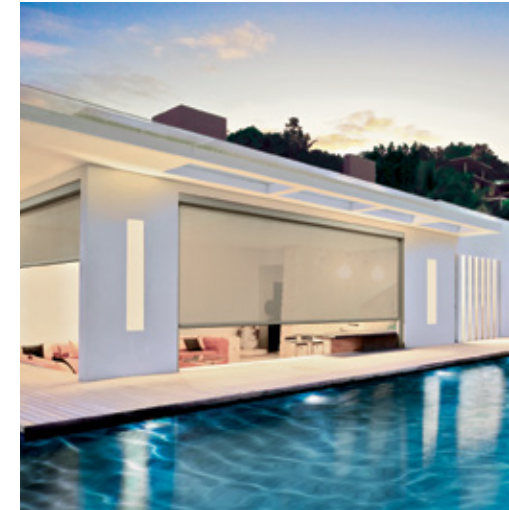
Our Alfresco Awnings have been independently tested and proven to significantly reduce cooling energy costs by keeping a standard* home at a consistent and comfortable temperature throughout the summer months.

wind load

Awnings have been tested to comply with a Class 3 level of Wind Resistance under European standard EN13561: 2009 - 01.

This level of Wind Resistance equates to a rating of '6' on the Beaufort Scale, which is equivalent to a wind speed of 49 km/h. It is recommended that all Awnings be retracted in windy conditions.

*Results based on a single storey, brick veneer home on a concrete slab using ducted air-conditioning and equally distributed windows with Alfresco (Alpha) Awnings installed with Canvas fabric. Based on independent modelling conducted by White Box Technologies in conjunction with Peter Lyons and Associates June 2013.



select alfresco awning style

Mix and match the Awning styles whilst still maintaining a consistent appearance for your home. All 3 Awning styles within the range use common hardware for a consistent appearance irrespective of which Awning style you choose. Personalise the perfect Awning to suit your external shading requirement.

CABLE GUIDE



Industrial look allowing privacy and ventilation.

SIDE RETENTION SYSTEM



Ideal for windy areas. Encloses an outside area, with no gaps for dust and dirt to enter.

STRAIGHT DROP



Sleek and simple with a modern aesthetic.



BOTTOM RAIL END CAPS

By floating in and out of the bottom rail the Awning operates smoothly without putting pressure on the cable.

cable guide alfresco awning

A great contemporary Straight Drop option for sun/UV protection, air flow and where channels are not suitable.

The cables are high tensile 2.5mm 316 grade marine stainless steel, making them perfect for coastal applications.

side retention system (SRS) alfresco awning

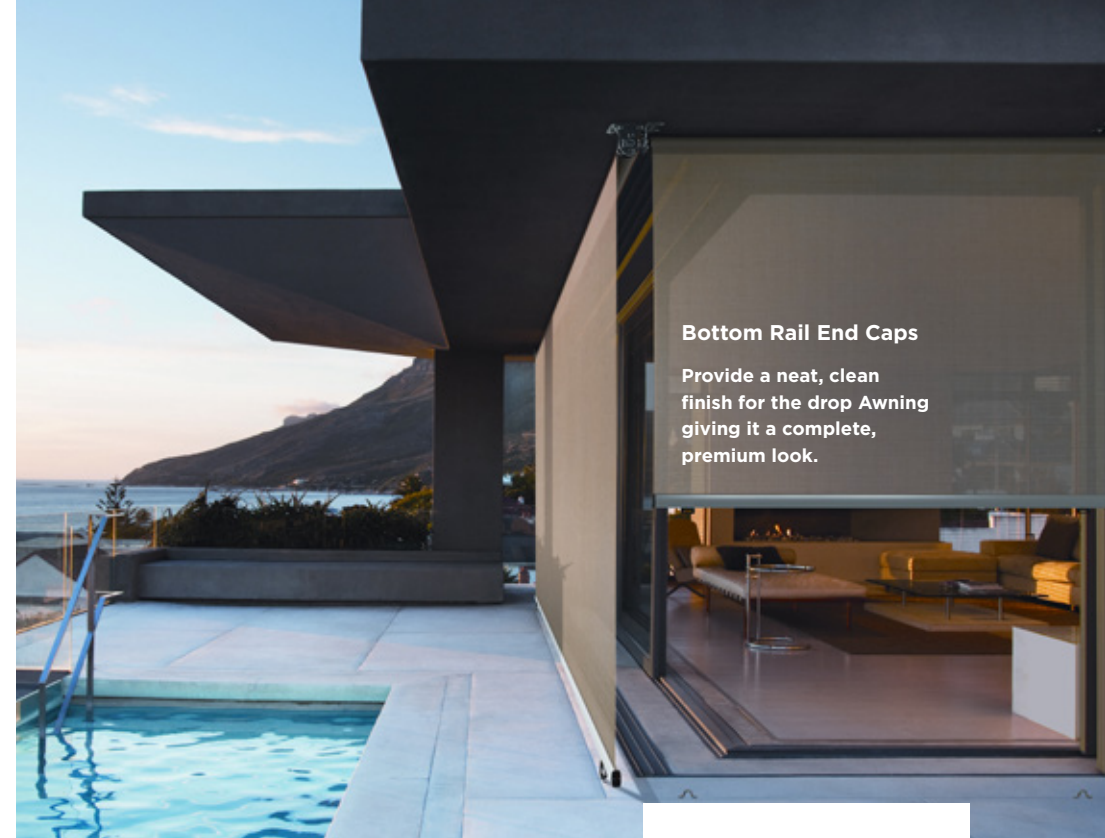
A option ideal for sun/UV protection, insect resistance, windy applications, enclosing a balcony or outdoor entertaining space plus creating privacy.

The fabric is tensioned by utilising a floating channel, located within the special two piece side channel, eliminating the possibility of fabric “blow outs” or light gaps.

Light lifting operating option with SRS

Allows you to raise and lower the Awning to any desired position by simply moving the bottom rail by hand.

The internal smooth spring mechanism provides you with lightweight and effortless operation without resistance.



Bottom Rail End Caps

Provide a neat, clean finish for the drop Awning giving it a complete, premium look.

Hold Down Straps

Can be used to hold down the Awning at various points across the bottom rail and assists in minimising bottom rail movement in stronger winds.

straight drop alfresco awning

A traditional Awning style that uses no guides making it ideal for sun/UV protection, air flow and where channels are not suitable.

The open roller is a modern industrial look with exposed componentry as it is available with or without a headbox.



select alfresco awning headbox options

For a modern contemporary look, our Alfresco Awnings offer two designer headbox options.

CLOSED HEADBOX



Keeps the fabric clean from rain, UV and dirt enhancing longevity.

OPEN HEADBOX



Increased air circulation around the roller minimising heat build up.

OPEN ROLLER



A modern industrial look and is the ideal choice to reduce costs.

select alfresco awning operating options

Our Alfresco Awnings have been developed to offer maximum flexibility for operation.

LIGHT LIFT

An innovative operating option allowing you to raise and lower the Awning to any desired position by simply moving the bottom rail by hand.

STANDARD SPRING OPERATION

Allows you to manually adjust the height of the Awning and secure using either the sliding bolt system or hold down clip option.

AUTOMATION

Using the best of technology and design, control your Awning with a touch of a button. Choose from our range of motorisation solutions including tactile remotes, app or voice control, and solar-powered ARC Wind and Sun Sensors.



MANUAL CRANK

The geared crank ensures easy operation that is not dependent on your strength.



select alfresco awning bottom rail accessories

The Alfresco Awning bottom rail holds the fabric taut and minimises any movement in windy situations. Designed with a subtle modern curve, it seamlessly blends with the headbox aesthetics.

WEIGHT BAR



An additional weight bar can be inserted into the heavy duty bottom rail. This is beneficial for smaller Awnings that require additional weight to reduce bottom rail bounce and increase fabric tension.

LOCKING BOLT



Secures the Awning into the universal floor mount bracket or locks off your SRS Awning at the lowered position.

HOLD DOWN STRAP



Hold down straps can be used to hold the Awning down at various points across the width of the Awning. Similar to the locking bolts, the hold down clips insert inside the bottom rail for a clean bottom rail finish.

pile brush + valance

The floor surface is often not perfectly level. When an Awning is installed over a wide width there will be room for light gaps, insects, debris, wind and rain to enter. With the ability to insert either pile brush or a fabric valance, this gap can be eliminated. The inserts also protect the bottom rail from chipping if dropped to the ground quickly.

FLUSH MOUNT STRAP DOWN LOOPS

Flush mount strap down loops (deck plates) are also available for Straight Drop Awnings, where a trip hazard can be avoided. Supply only.



automation

Our Automate external motors are tailored for our Window Awnings, Zipscreen Awnings and Alfresco Awning ranges. Automation reduces the time and effort normally required to operate your Awnings and allows you to open or close the Awnings from inside your home, without the need to go outside.

Choose from battery operated or hardwired motors. For battery operated, a black battery pack is used for easy access when charging or it can be swapped over with an additional battery pack for continuous power. The battery pack will hold charge for up to 12 months and fully recharges within 7 hours.

Our hardwired motors connect to power, so with a permanent power supply there is no need to recharge.

BATTERY OPERATED OR WIRED OUTDOOR MOTORS



Favourite Positioning



Impact Detection



Three Modes of Fabric Tension



BATTERY OPERATED EXTERNAL MOTOR

Voltage: 12V-DC
Strength: 15.0Nm
Speed: 10RPM
Min Shade Size: 1000mm



WIRED EXTERNAL TENSION MOTOR

Voltage: 240V
Strength: 15.0Nm
Speed: 15RPM
Min Shade Size: 1000mm

CONTROLLERS



Pulse Hub 2 + App



Push 15 Remote

ACCESSORIES



Repeater



battery operated outdoor motor

BATTERY PACK CHARGING OPTIONS



Remove + Recharge

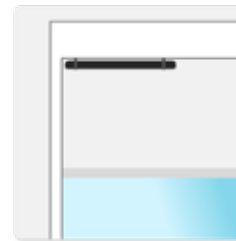


Plug + Play

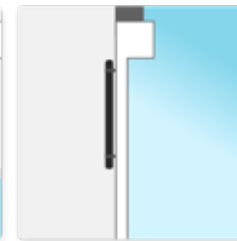


Swap + Sustain

BATTERY PACK INSTALLATION OPTIONS



Under headbox



Covered face of side channel



Above headbox





SMART PHONE CONTROL

For effortless and luxurious outdoor living, pair your motorised Awning with our Automate Pulse Hub 2 and enjoy sophisticated control straight from your smart phone whether you're home or away. Set automatic timers or smart scenes and experience a new level of convenience.



VOICE CONTROL

Life can get in the way sometimes, so if you're too busy preparing for the things that matter, simply ask Google, Alexa or Siri to take control of your outdoor Awnings. A simple voice command can raise or lower your outdoor window coverings so you can keep your hands free for everything else.

SOLAR POWERED WIND + SUN SENSOR



Wind & Light Measurements



Power Storage Capacitor



LCD Display



Our Solar Powered Wind and Sun Sensor measures wind and light intensity to automatically open your Awning once sunlight is detected to provide convenient shading and close in windy conditions to protect and preserve your Awning.

Imagine entertaining outdoors on a bright sunny day, the sun intensity and need for shade increasing. You can be rest assured knowing that your motorised Awning,

connected to our Sensor, will activate the Awning to close achieving the optimal level of shade. This occurs when a pre-set lux level is reached, signalling to the Awning that it needs to open and provide shade.

Never worry about the battery depleting with a built-in solar panel that keeps the battery charged for optimum functionality. The Sensor can be mounted to the roof, wall, eave or fascia, to suit your requirements.

STEP

3

select fabric

For sun control and style, our outdoor fabrics are the perfect choice when it comes to Blinds and Awnings. Our large range of mesh fabrics includes a selection of colours inspired by Colorbond® which means you can match to any existing outdoor theme.

As there are several fabrics to choose from keep below in mind to select the right fabric to suit your outdoor requirements.



privacy + view through

There are open and closed weave Awning fabrics. Consider if you want day or night time privacy. An open weave fabric in a dark colour gives fantastic view through in the day, but also allows others to see in at night.

air flow

If you are enclosing a verandah or patio, consider if you still want to have a nice cool breeze coming through. If this is required, ensure you select our open weave fabric with around 5% openness.

durability

Be mindful that when a fabric is used outdoors it is exposed to the elements. Our fabrics with DURAGUARD® Fabric Protector effectively repel most stain causing agents with its proven, water based, preventative formula. This fabric protection is totally invisible and has high levels of stain repellence. It makes cleaning and maintaining the fabric so much easier.

colour fastness

Ensure the fabric you choose has excellent fade resistance to the sun. Our fabrics are tested to resist fading to ensure your Awnings remain the colour you selected for many years to come.



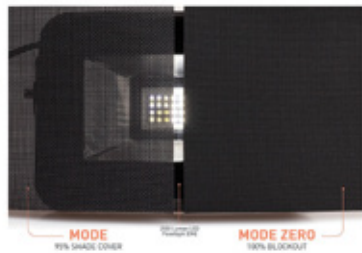
mesh

Modern breathable mesh is a perfect choice for a mix of air flow and privacy.

Mesh fabric is available with an approximate shade cover of 95% with a 5% openness factor. This is ideal for providing protection from the sun whilst allowing you to enjoy your views.

If you're looking for increased privacy then opt for our mesh fabric with an approximate shade coverage of 99%. With its blackout coverage it will also aid to block out views and increases your wind and rain protection.

The innovative Mode Zero fabric is a modern alternative to canvas. The first true 100% blackout mesh it provides complete privacy and sun protection with its zero % openness, and with a wider width of 320cm, Mode Zero also allows for less fabric joins with most windows.



canvas

Ideal choice for complete 100% UV Blockout, choose from a range of widths in plain, self striped and coloured stripe designs.

acrylic

The versatility of 100% Acrylic makes it suited and recommended for folding arm Awnings, hoods and canopies.



Our outdoor fabrics are manufactured to withstand the harsh Australian climate with fade, water, mildew and UV protection. Fire retardant fabrics are also available.

STEP

4

select hardware colour

Our outdoor ranges are available in a range of standard hardware colours and custom colours are also available to match the homes exterior.



The largest range of custom made curtains+blinds+shutters+outdoor.
Contact us for your local store P. (03) 9237 1200



FREE measure+quote

dollarcurtainsandblinds.com.au

